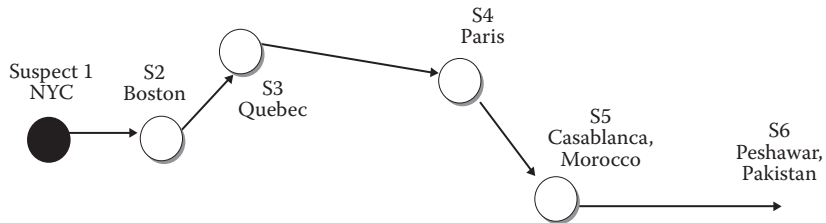
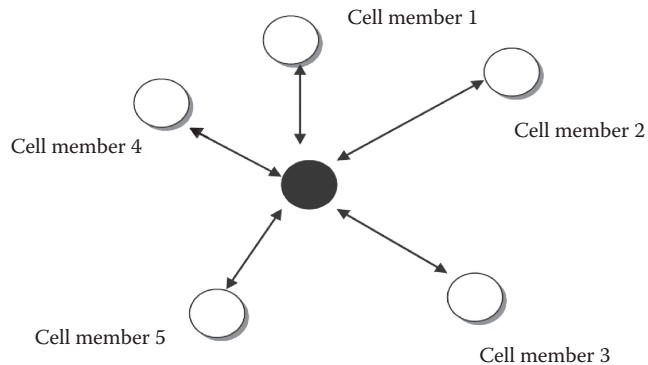


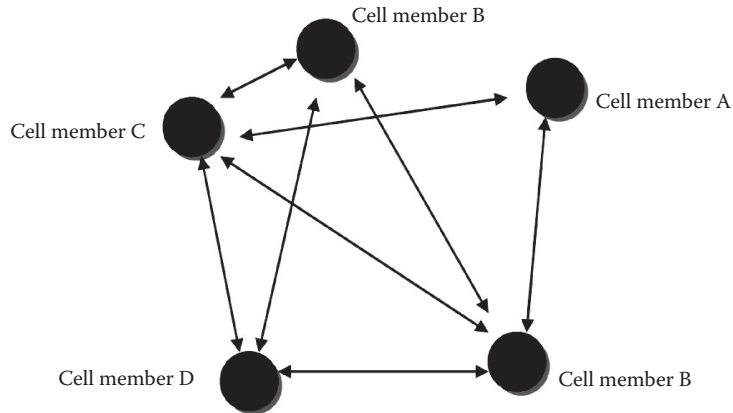
**Figure 4.1** Nodal diyads. (From M. W. Nance, *Terrorist Recognition Handbook: A Practitioner's Manual for Predicting and Identifying Terrorist Activities*, Second Edition, CRC Press, 2008. With permission.)



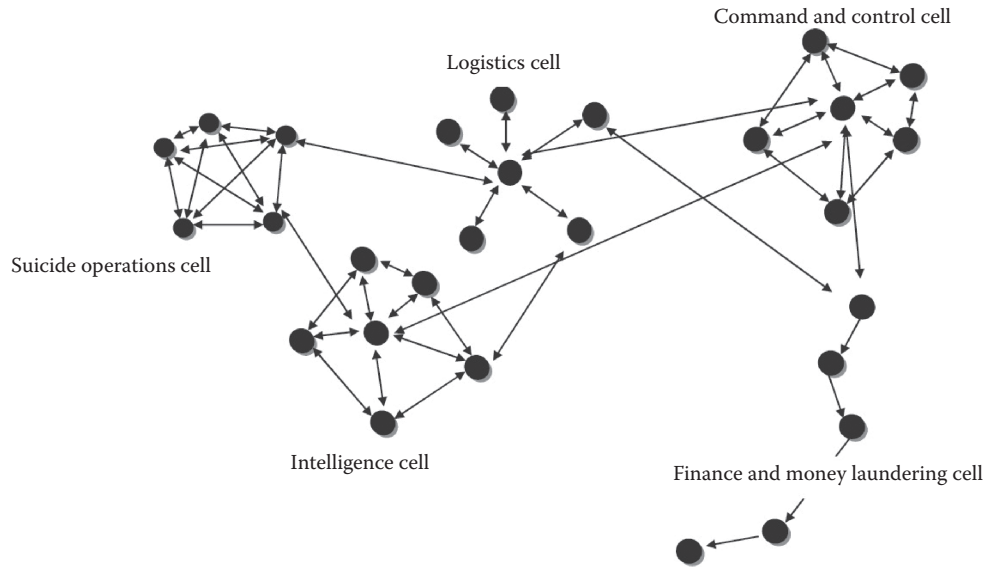
**Figure 4.2** Chain network. (From M. W. Nance, *Terrorist Recognition Handbook: A Practitioner's Manual for Predicting and Identifying Terrorist Activities*, Second Edition, CRC Press, 2008. With permission.)



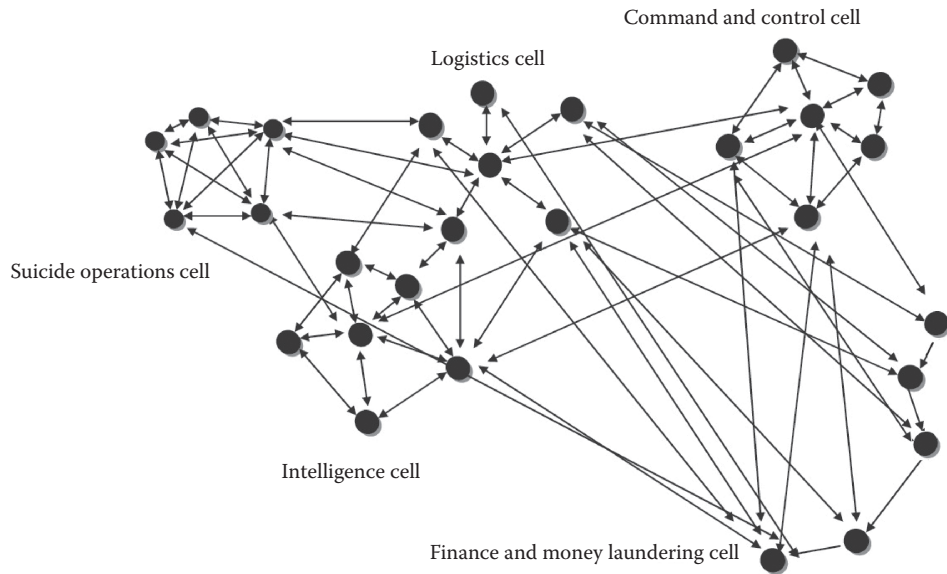
**Figure 4.3** Hub or star network. (From M. W. Nance, *Terrorist Recognition Handbook: A Practitioner's Manual for Predicting and Identifying Terrorist Activities*, Second Edition, CRC Press, 2008. With permission.)



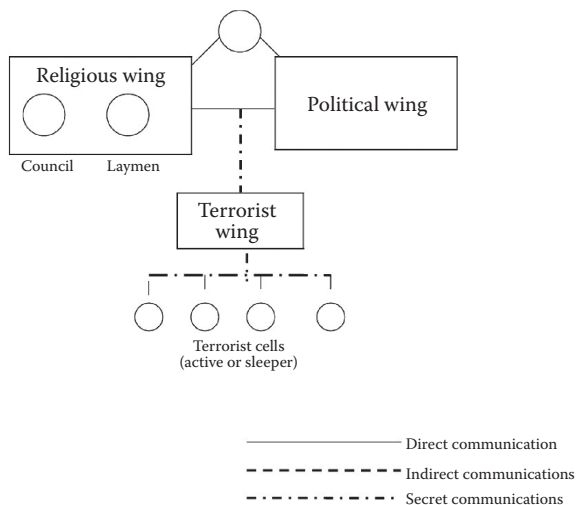
**Figure 4.4** All channel network. (From M. W. Nance, *Terrorist Recognition Handbook: A Practitioner's Manual for Predicting and Identifying Terrorist Activities*, Second Edition, CRC Press, 2008. With permission.)



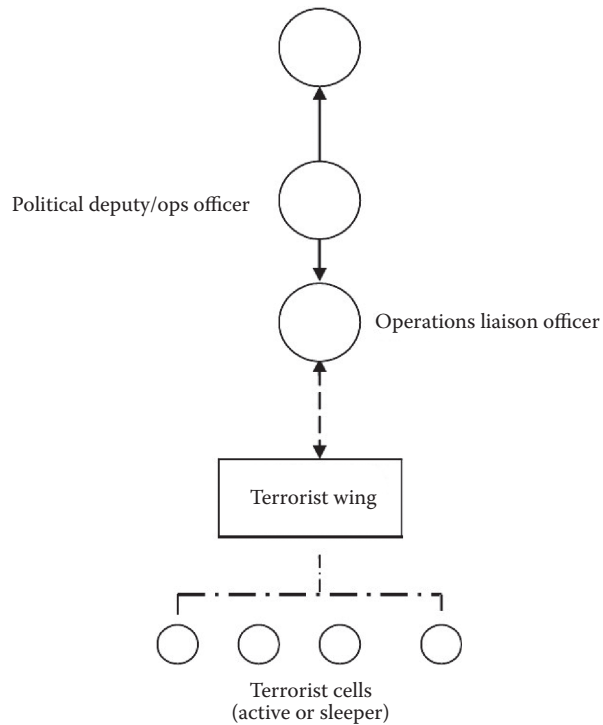
**Figure 4.5** Hybrid network, low density. (From M. W. Nance, *Terrorist Recognition Handbook: A Practitioner's Manual for Predicting and Identifying Terrorist Activities*, Second Edition, CRC Press, 2008. With permission.)



**Figure 4.6** Hybrid network, high density. (From M. W. Nance, *Terrorist Recognition Handbook: A Practitioner's Manual for Predicting and Identifying Terrorist Activities*, Second Edition, CRC Press, 2008. With permission.)



**Figure 4.7** Religious terrorist organization structure. (From M. W. Nance, *Terrorist Recognition Handbook: A Practitioner's Manual for Predicting and Identifying Terrorist Activities*, Second Edition, CRC Press, 2008. With permission.)



**Figure 4.8** Political terrorist organization structure. (From M. W. Nance, *Terrorist Recognition Handbook: A Practitioner's Manual for Predicting and Identifying Terrorist Activities*, Second Edition, CRC Press, 2008. With permission.)