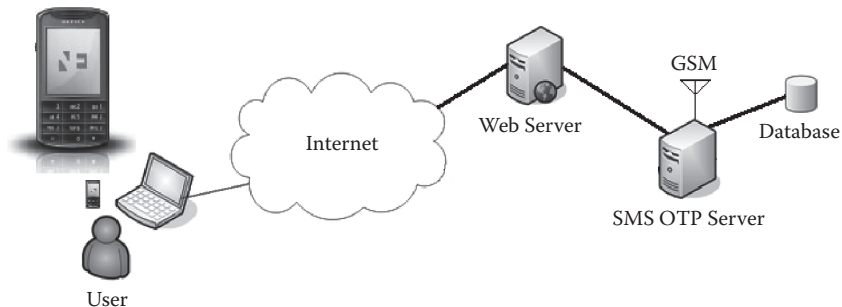


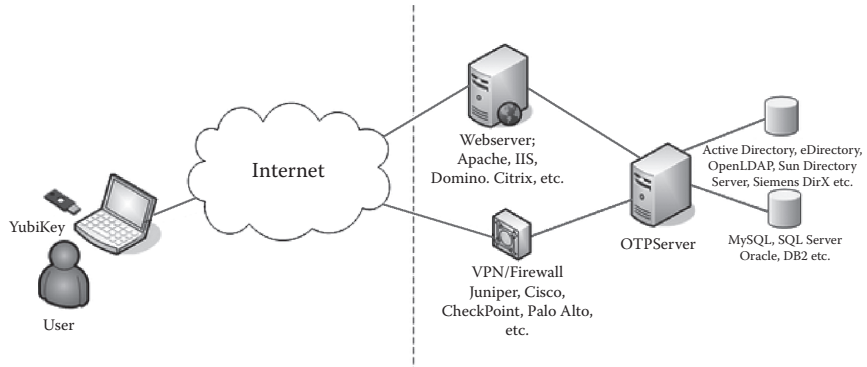
**Figure 2.1** Authorization criteria.



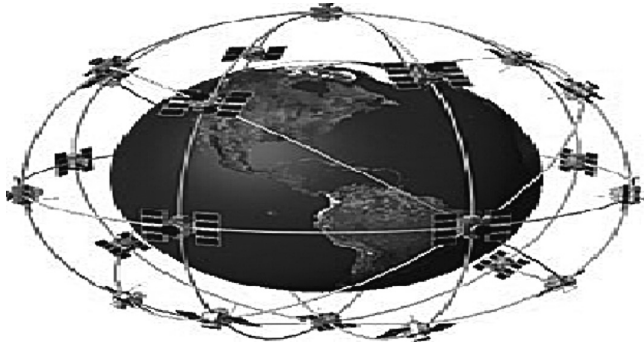
**Figure 2.2** Authentication technology using an OTP delivered as an SMS to the user. (Courtesy of Nordic Edge, <http://www.nordicedge.se>.)



**Figure 2.3** Biometric fingerprint reading in USB form. (Courtesy of <http://www.yubico.com>.)



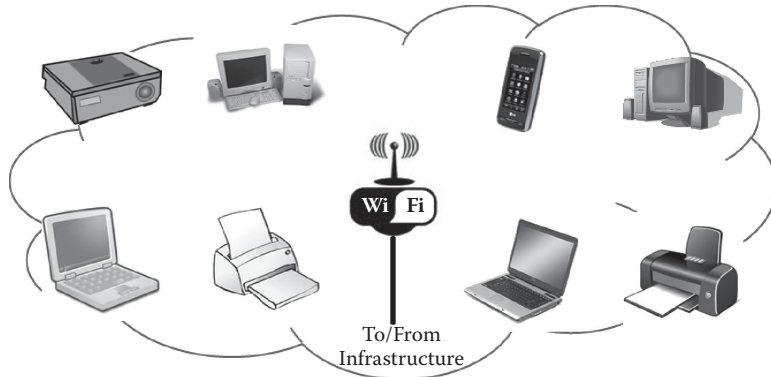
**Figure 2.4** Authentication technology network using biometrics (fingerprint) and OTP. (Courtesy of Nordic Edge, <http://www.nordicedge.se>.)



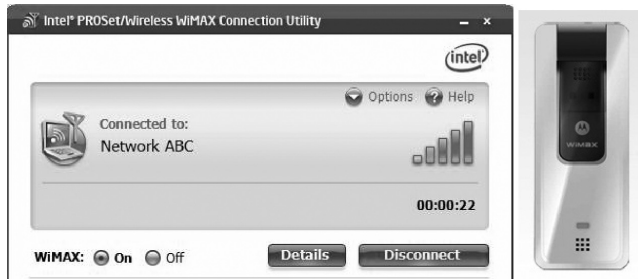
**Figure 2.5** The GPS and its twenty-four satellite constellation.



**Figure 2.6** PAN employing BT technology.

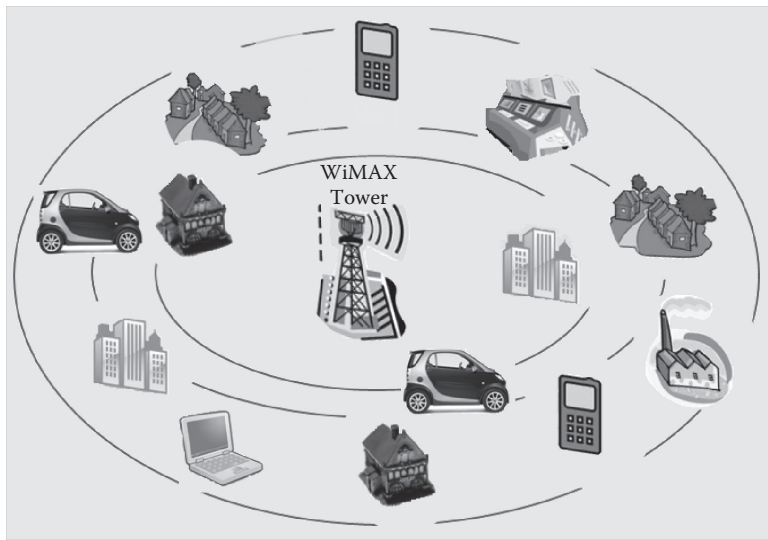


**Figure 2.7** A typical WLAN network where diverse types of equipment communicate with each other and with the infrastructure, all via Wi-Fi.

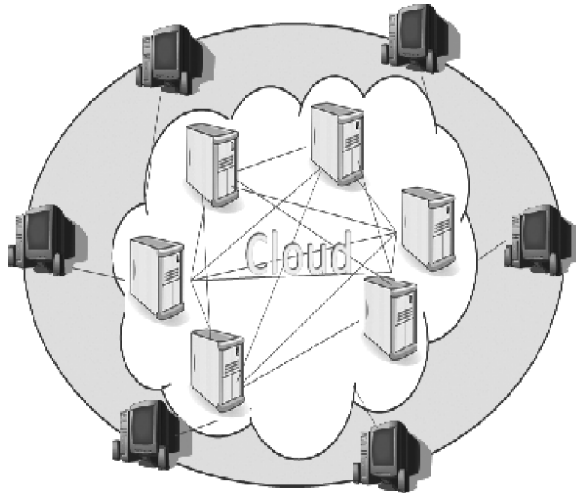


**Figure 2.8** WiMAX control window and a USB WiMAX adapter. (From Intel, [http://download.intel.com/support/wireless/wmax/5350\\_5150/S6/intelrprosetwirelesswimax userguide.pdf](http://download.intel.com/support/wireless/wmax/5350_5150/S6/intelrprosetwirelesswimax%20userguide.pdf).)





**Figure 2.9** Typical WiMAX network where Internet access can be wirelessly provided to a metropolitan area.



**Figure 2.10** Cloud computing. The only user requirement is Internet access.