

FIGURE 2.1

This is an early 35-mm film camera. It is a range-finder camera (no TTL [through the lens] viewing) with the shutter built into the lens.



FIGURE 2.2

A speed graphic 4 × 5 inch sheet film camera. Notice the sighting (picture composition) device on the top of the camera. It consists of a small metal rectangle with sights through a larger metal rectangle.

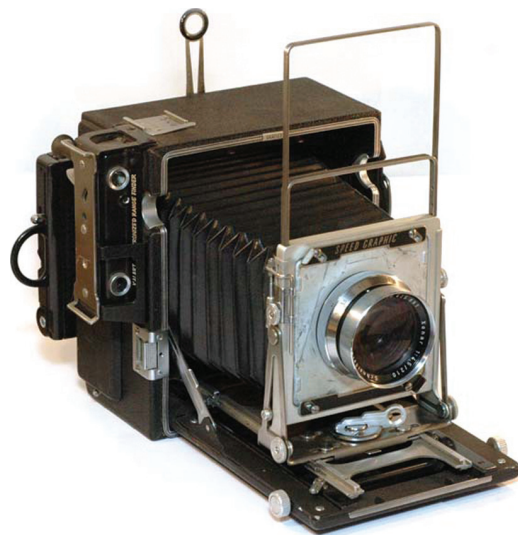


FIGURE 2.3

These are 4 × 5 inch film holders.



FIGURE 2.4

Rolleiflex twin-lens reflex cameras. The camera views through one lens (top) and uses the bottom lens to expose the film. The camera takes 120 and 220 roll film.



FIGURE 2.5

A Nikon EM 35-mm film camera.



FIGURE 2.6

This image shows how the SLR camera sees exactly what the lens sees. It demonstrates the path of light as it travels from the subject to the photographer's eye. When the shutter is depressed, the mirror drops down, and the film is exposed.

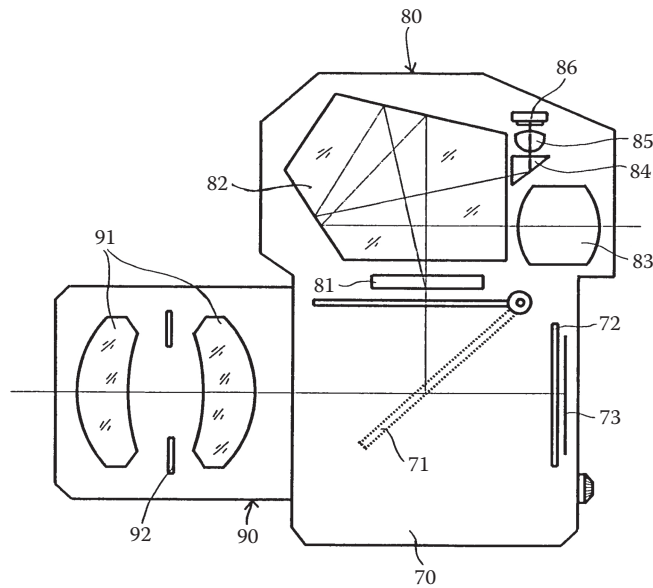


FIGURE 2.7

Just some of the many Nikon lenses available for Nikon film and digital SLR cameras.



FIGURE 2.8

An early Nikon “snapshot” camera. It uses digital media to record images instead of film.



FIGURE 2.9

A Nikon snapshot camera. As technology developed, the cameras became smaller; there are more features available, and the quality of images has increased.



FIGURE 2.10

A Polaroid camera. It creates a small color photograph with no negative. The picture would self-develop in 1 minute and was somewhat costly at about a dollar a shot. With the introduction of digital cameras, we now have instant images available that can be reprinted as exact duplicates of the original. The digital age has basically relegated the Polaroid to dinosaur status.



FIGURE 2.11

The 35-mm disposable camera. It comes preloaded with film and has a battery that supplies the flash. When the last shot is taken, it is taken to the processor, and camera and film are processed. The camera is not returned. In the “film” days, it was always a good idea to carry a few of these cameras in case your 35-mm camera failed.



FIGURE 2.12

A small sampling of film available for the 35-mm camera.

