



Assessment Name: RN Community Health 2016

Time Remaining: 00:59:54

Pause Remaining: 00:05:00

Pause

Question: 1-1 of 60 Page: 1 of 60



1

A community health nurse observes the accumulation of garbage at a neighborhood playground. Which of the following actions should the nurse take first to promote a clean and safe environment?



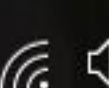
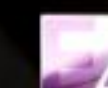
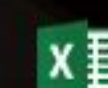
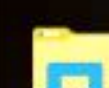
- Work with local businesses to sponsor more trash receptacles in the playground.
- Meet with community members to discuss methods of playground maintenance.
- Partner city officials with community members to improve the playground's condition.
- Engage neighborhood families to monitor the playground for further trash buildup.

Next >



**Note: Clicking outside of this window will pause your test.**

If your popup blocker is enabled, clicking the window's "X" button or pressing "Alt-F4" will stop your test session and close all windows.





Assessment Name: RN Community Health 2016

Time Remaining: 00:59:48

Pause Remaining: 00:05:00

Pause

Question: 2-2 of 60 Page: 2 of 60



2

A home health nurse is planning the initial home visit for a client who has dementia and lives with his adult son's family. Which of the following actions should the nurse take first during the visit?



- Educate the family regarding the progression of dementia.
- Engage the family in informal conversation.
- Provide the family with information about respite care.
- Encourage the family to join a support group.

Next >



**Note: Clicking outside of this window will pause your test.**

If your popup blocker is enabled, clicking the window's "X" button or pressing "Alt-F4" will stop your test session and close all windows.

