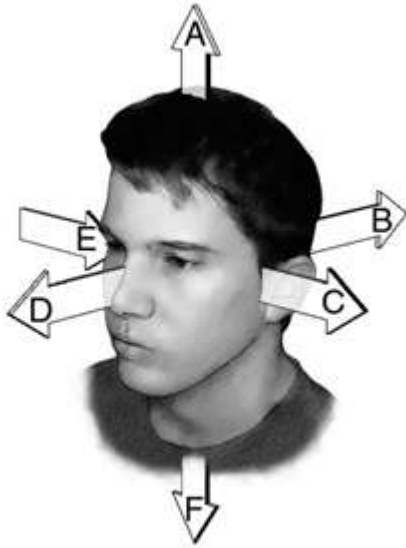


1. What are the major functions of the cerebellum?
2. Identify the brain's primary functions.
3. Define the terms afferent and efferent.
4. List the meninges from the outside to the surface of the brain. Where does the cerebrospinal fluid flow?
5. Your friend acquired frontal lobe damage in a car accident. What symptoms are they likely to display?
6. Differentiate between sulci and gyri.
7. Differentiate between gray matter and white matter.
8. What do the ventricles do?
9. What is a stroke? What are the two major types of stroke?
10. Differentiate between glial cells and neurons.
11. List the primary divisions of the central nervous system.
12. List the principal structures in the hindbrain.
13. What are the major subdivisions and structures within the midbrain?
14. What are the functions of the hypothalamus?
15. What are the principal structures and functions of the diencephalon?

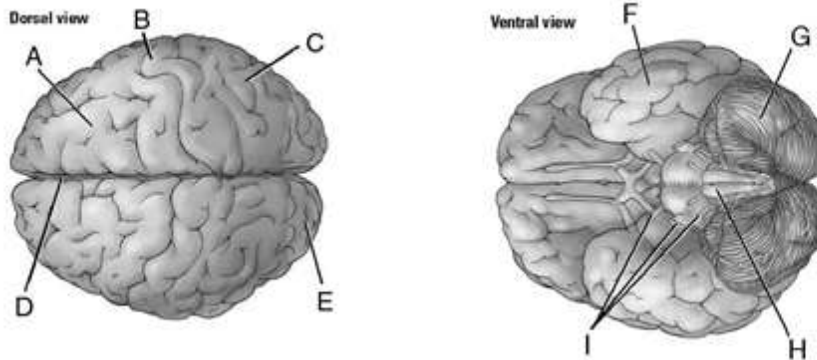
1. The cerebellum contains \_\_\_\_\_ of all the neurons in the adult human brain.
  - A) 20%
  - B) 50%
  - C) 10%
  - D) 80%
  
2. Neural agenesis refers to:
  - A) an injury to a brain structure.
  - B) the degeneration of a structure.
  - C) the failure of a structure to develop.
  - D) the creation of a brain structure.
  
3. If a tree falls in the forest, does it make a sound if no one is present?
  - A) Yes, because sound is a physical phenomenon.
  - B) Yes, because if you record the noise and play it again later you will hear it.
  - C) No, because sound is a fabrication of your brain.
  - D) This is an unanswerable philosophical question.
  
4. Phenotypic plasticity refers to:
  - A) how an organism's genotype can be influenced by environmental factors.
  - B) how an organism's genetics can be influenced by its nervous system.
  - C) the study of nervous system plasticity.
  - D) None of the answers is correct.
  
5. The CNS includes the \_\_\_\_\_, whereas the PNS includes the \_\_\_\_\_.
  - A) brain and autonomic nervous system; spinal cord and somatic nervous system
  - B) spinal cord and autonomic nervous system; brain and somatic nervous system
  - C) spinal cord and brain; autonomic nervous system and somatic nervous system
  - D) somatic nervous system and brain; spinal cord and autonomic nervous system
  
6. The somatic nervous system includes the \_\_\_\_\_, whereas the autonomic nervous system includes the \_\_\_\_\_.
  - A) sympathetic and parasympathetic divisions; cranial nerves and spinal nerves
  - B) brain and spinal cord; cranial nerves and spinal nerves
  - C) sympathetic and parasympathetic divisions; brain and spinal cord
  - D) cranial nerves and spinal nerves; sympathetic and parasympathetic divisions

1. Match the letters to the correct anatomical term.



- \_\_\_\_\_ 1. ventral
- \_\_\_\_\_ 2. lateral
- \_\_\_\_\_ 3. dorsal
- \_\_\_\_\_ 4. posterior
- \_\_\_\_\_ 5. medial
- \_\_\_\_\_ 6. anterior

2. Match the letters to the correct location on the figure.



- \_\_\_\_\_ 1. occipital lobe
- \_\_\_\_\_ 2. brainstem
- \_\_\_\_\_ 3. temporal lobe
- \_\_\_\_\_ 4. frontal lobe
- \_\_\_\_\_ 5. longitudinal fissure
- \_\_\_\_\_ 6. cerebellum
- \_\_\_\_\_ 7. cranial nerves
- \_\_\_\_\_ 8. central sulcus
- \_\_\_\_\_ 9. parietal lobe

